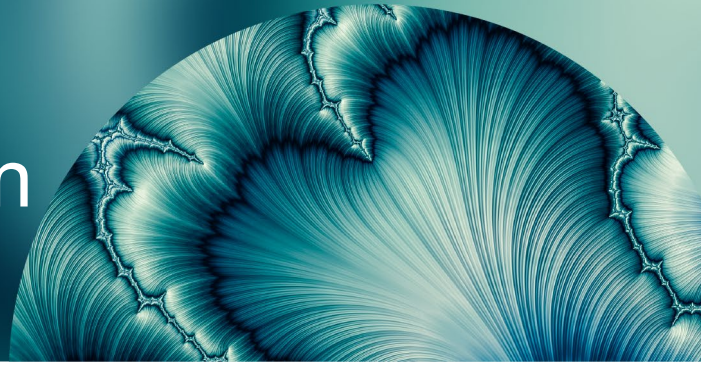


A reference index for China's offshore green bond market



“When looking for a partner to develop a green bond index, FTSE Russell’s long-standing experience in building sustainable indices was attractive for us. We also valued FTSE Russell’s ability to customise a green bond index to meet our requirements, while adhering to global standards.”

Gabriel Yu, Portfolio Manager, Ping An of China Asset Management (Hong Kong) Company Limited

中国平安资产管理（香港） PING AN OF CHINA ASSET MANAGEMENT (HONG KONG)

About the client

Profile

Ping An of China Asset Management (Hong Kong) Company Limited (“PAAMC (HK)”) is the overseas investments and asset management platform of Ping An Group.

Objectives

PAAMC (HK) required a new reference index, aligned with global standards, for its investments in the rapidly growing Chinese offshore green bond market.

Solution

The FTSE APAC-Select Investment-Grade Green Impact USD Bond Index helped PAAMC (HK) benchmark the returns of the Chinese and Asian investment grade offshore green bond market.



**FTSE
RUSSELL**

An LSEG Business

Client Profile

Ping An Insurance (Group) Company of China, Ltd. ("Ping An") is a world-leading integrated finance and healthcare services provider. In 2022, Ping An ranked 25th in the Fortune Global 500 list (an annual ranking of the world's top 500 companies by revenue) as well as 4th among global financial services companies¹.

Ping An has committed to becoming carbon-neutral at the operational level by 2030 and at the asset level by 2060, in line with China's green transition targets. These aim to achieve a peak in the country's greenhouse gas emissions by 2030 and carbon neutrality by 2060.

In 2019, Ping An became a signatory to the United Nations-supported Principles for Responsible Investment (UN PRI), the first asset owner in mainland China to do so. In 2019, Ping An also became the first Chinese asset owner to join Climate Action 100+, an investor initiative to ensure the world's largest corporate greenhouse gas emitters take necessary action on climate change.

Ping An of China Asset Management (Hong Kong) Company Limited ("PAAMC (HK)") is the overseas investments and asset management platform of Ping An Group. PAAMC (HK) offers investment products, asset management and consulting services, including open- and closed-end funds, ETFs and mandates in equity, fixed income, hedge funds, AI and quantitative investments, as well as other alternative investments.

Client Objectives

The transition to a sustainable global economy requires an increase in the provision of finance to projects that deliver positive outcomes for the environment and society.

The bond market plays a critical role in attracting and directing private capital towards such outcomes and so-called 'green bonds' are a type of bond designed to produce a measurable and positive climate or environmental impact.

Since the first green bonds were issued in 2007, the market has grown to nearly US\$2.5trn in aggregate issuance. Within this total, China is playing an increasingly important role, with the country issuing more green bonds in 2022 than any other national economy. China's green bond market includes both bonds issued domestically (in yuan) and those issued offshore (in foreign currency).

The FTSE APAC-Select Investment-Grade Green Impact USD Bond index

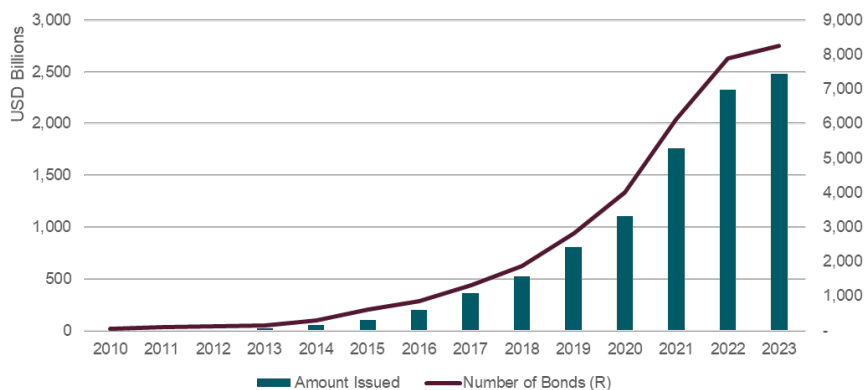
is a custom index based on the FTSE Green Impact Bond index series.

It has been designed to ensure that green bonds issued by entities in Greater China (defined as China, Macau, Hong Kong, and Taiwan) will make up no less than 60% of the index by market value weight. The remaining green bonds are issued by entities in the Asia-Pacific region.

The index includes bonds issued by investment-grade entities only and is subject to minimum issue size, liquidity and diversification constraints.

¹ <https://fortune.com/company/ping-an-insurance/global500/>

Growth of the green bond market



Source: Refinitiv, as of March 2023

In 2022, PAAMC (HK) wished to appoint a new reference index provider for its range of green bond funds and products. It set the following requirements for the provider:

- **Experience**—the reference index provider should have long-standing experience in offering and managing sustainable investment indices;
- **Representativeness**—the index provider should have access to and the ability to price all components of the China green bond market;
- **Alignment**—the index methodology should be aligned with key global standards for the green bond market, such as the Climate Bonds Initiative's Climate Bonds Standard (CBS) and the International Capital Market Association's (ICMA's) Green Bond Principles (GBP);
- **Ability to customise**—the provider should offer PAAMC (HK) the ability to customise the index, for example by setting constraints for geographical focus, credit rating, currency of issue, liquidity and minimum diversification.

Solution

PAAMC (HK) decided to select the FTSE APAC-Select Investment-Grade Green Impact USD Bond index as a reference index for its investments in Chinese and Asian green bonds.

This index is part of the FTSE Green Impact Bond index series, which provides a comprehensive measure of the global green bond market across fixed income asset classes and credit sectors.

The index series measures the performance of both investment-grade and high-yield multi-currency green debt issued by governments, government-sponsored entities, supranational institutions, collateralised bond issuers and corporations.

A bond is eligible for the index series if its issuance proceeds are earmarked for projects that have an environmental and/or climate benefit and it has been labelled as 'green' by the Climate Bonds Initiative (CBI) and is aligned with the International Capital Markets Association's (ICMA) Green Bond Principles (GBP).

Under the CBI taxonomy and the GBP, four core components ensure the transparency and governance of green bond issuance:

- **Use of proceeds**—the issuance proceeds of a green bond must achieve specific environmental objectives, such as climate change mitigation or pollution prevention and control;

- **Process for project evaluation and selection**—an issuer’s process for project and selection should be supplemented by an external review;
- **Management of proceeds**—issuers should verify the internal tracking process and the allocation of funds from the bond issue;
- **Reporting**—the annual report should include projects to which green bond proceeds have been allocated, the amounts and expected impact.

Four-pillar requirements for a green bond issue

GUIDELINES	
Climate Bond Standard (CBS)	Green Bond Principles (GBP)
HARMONIZED REQUIREMENTS	
Under both CBS and GBP, a Green Bond issuer should meet the four-pillar requirements.	<ol style="list-style-type: none"> 1. Use of Proceeds 2. Process for Project Evaluation and Selection 3. Management of Proceeds 4. Reporting

As well as complying with these design features of the FTSE Green Impact Bond index series, PAAMC (HK)’s chosen green bond reference index (the FTSE APAC-Select Investment-Grade Green Impact USD Bond index) also met specific criteria, including:

- **Geographical focus**—Greater China, defined to be mainland China, Macau, Hong Kong, and Taiwan, will make up no less than 60% of the index by market value weight, with 40% of the index represented by green bonds from other Asian markets (India, Indonesia, South Korea, New Zealand, Philippines, Vietnam, Singapore, Pakistan, Australia, Malaysia and Thailand);
- **Credit rating**—the index only includes bonds with an investment-grade credit rating (BBB- or above);
- **Currency**—only USD-denominated green bonds are included;
- **Liquidity and diversification**—the minimum green bond issue size for index inclusion is \$300m and individual issuers’ index weights are capped at 7%.

PAAMC (HK) is now using the FTSE APAC-Select Investment-Grade Green Impact USD Bond index in client reporting, risk management and internal performance attribution.

Additional information

For more on the FTSE Impact Bond index series, [click here](#). For more on the FTSE Green Impact Bond index series, [click here](#). For more on the FTSE Ping An China ESG (equity) index series, [click here](#).

Details of all FTSE Russell products and services are available at our website, ftserussell.com

ABOUT FTSE RUSSELL

FTSE Russell is a leading global provider of index and benchmark solutions, spanning diverse asset classes and investment objectives. As a trusted investment partner we help investors make better-informed investment decisions, manage risk, and seize opportunities.

Market participants look to us for our expertise in developing and managing global index solutions across asset classes. Asset owners, asset managers, ETF providers and investment banks choose FTSE Russell solutions to benchmark their investment performance and create investment funds, ETFs, structured products, and index-based derivatives. Our clients use our solutions for asset allocation, investment strategy analysis and risk management, and value us for our robust governance process and operational integrity.

For over 35 years we have been at the forefront of driving change for the investor, always innovating to shape the next generation of benchmarks and investment solutions that open up new opportunities for the global investment community.

CONTACT US

To learn more, visit [lseg.com/ftse-russell](https://www.lseg.com/ftse-russell); email info@ftserussell.com; or call your regional Client Service team office:

EMEA +44 (0) 20 7866 1810

Asia-Pacific

North America +1 877 503 6437

Hong Kong +852 2164 3333

Tokyo +81 3 6441 1430

Sydney +61 (0) 2 7228 5659

Disclaimer

© 2023 London Stock Exchange Group plc and its applicable group undertakings ("LSEG"). LSEG includes (1) FTSE International Limited ("FTSE"), (2) Frank Russell Company ("Russell"), (3) FTSE Global Debt Capital Markets Inc. and FTSE Global Debt Capital Markets Limited (together, "FTSE Canada"), (4) FTSE Fixed Income Europe Limited ("FTSE FI Europe"), (5) FTSE Fixed Income LLC ("FTSE FI"), (6) FTSE (Beijing) Consulting Limited ("WOFE") (7) Refinitiv Benchmark Services (UK) Limited ("RBSL"), (8) Refinitiv Limited ("RL") and (9) Beyond Ratings S.A.S. ("BR"). All rights reserved.

FTSE Russell® is a trading name of FTSE, Russell, FTSE Canada, FTSE FI, FTSE FI Europe, WOFE, RBSL, RL, and BR. "FTSE®", "Russell®", "FTSE Russell®", "FTSE4Good®", "ICB®", "Refinitiv", "Beyond Ratings®", "WMR™", "FR™" and all other trademarks and service marks used herein (whether registered or unregistered) are trademarks and/or service marks owned or licensed by the applicable member of LSEG or their respective licensors and are owned, or used under licence, by FTSE, Russell, FTSE Canada, FTSE FI, FTSE FI Europe, WOFE, RBSL, RL or BR. FTSE International Limited is authorised and regulated by the Financial Conduct Authority as a benchmark administrator. Refinitiv Benchmark Services (UK) Limited is authorised and regulated by the Financial Conduct Authority as a benchmark administrator.

All information is provided for information purposes only. All information and data contained in this publication is obtained by LSEG, from sources believed by it to be accurate and reliable. Because of the possibility of human and mechanical inaccuracy as well as other factors, however, such information and data is provided "as is" without warranty of any kind. No member of LSEG nor their respective directors, officers, employees, partners or licensors make any claim, prediction, warranty or representation whatsoever, expressly or impliedly, either as to the accuracy, timeliness, completeness, merchantability of any information or LSEG Products, or of results to be obtained from the use of LSEG products, including but not limited to indices, rates, data and analytics, or the fitness or suitability of the LSEG products for any particular purpose to which they might be put. The user of the information assumes the entire risk of any use it may make or permit to be made of the information.

No responsibility or liability can be accepted by any member of LSEG nor their respective directors, officers, employees, partners or licensors for (a) any loss or damage in whole or in part caused by, resulting from, or relating to any inaccuracy (negligent or otherwise) or other circumstance involved in procuring, collecting, compiling, interpreting, analysing, editing, transcribing, transmitting, communicating or delivering any such information or data or from use of this document or links to this document or (b) any direct, indirect, special, consequential or incidental damages whatsoever, even if any member of LSEG is advised in advance of the possibility of such damages, resulting from the use of, or inability to use, such information.

No member of LSEG nor their respective directors, officers, employees, partners or licensors provide investment advice and nothing in this document should be taken as constituting financial or investment advice. No member of LSEG nor their respective directors, officers, employees, partners or licensors make any representation regarding the advisability of investing in any asset or whether such investment creates any legal or compliance risks for the investor. A decision to invest in any such asset should not be made in reliance on any information herein. Indices and rates cannot be invested in directly. Inclusion of an asset in an index or rate is not a recommendation to buy, sell or hold that asset nor confirmation that any particular investor may lawfully buy, sell or hold the asset or an index or rate containing the asset. The general information contained in this publication should not be acted upon without obtaining specific legal, tax, and investment advice from a licensed professional.

Past performance is no guarantee of future results. Charts and graphs are provided for illustrative purposes only. Index and/or rate returns shown may not represent the results of the actual trading of investable assets. Certain returns shown may reflect back-tested performance. All performance presented prior to the index or rate inception date is back-tested performance. Back-tested performance is not actual performance, but is hypothetical. The back-test calculations are based on the same methodology that was in effect when the index or rate was officially launched. However, back-tested data may reflect the application of the index or rate methodology with the benefit of hindsight, and the historic calculations of an index or rate may change from month to month based on revisions to the underlying economic data used in the calculation of the index or rate.

This document may contain forward-looking assessments. These are based upon a number of assumptions concerning future conditions that ultimately may prove to be inaccurate. Such forward-looking assessments are subject to risks and uncertainties and may be affected by various factors that may cause actual results to differ materially. No member of LSEG nor their licensors assume any duty to and do not undertake to update forward-looking assessments.

No part of this information may be reproduced, stored in a retrieval system or transmitted in any form or by any means, electronic, mechanical, photocopying, recording or otherwise, without prior written permission of the applicable member of LSEG. Use and distribution of LSEG data requires a licence from LSEG and/or its licensors.



**FTSE
RUSSELL**
An LSEG Business